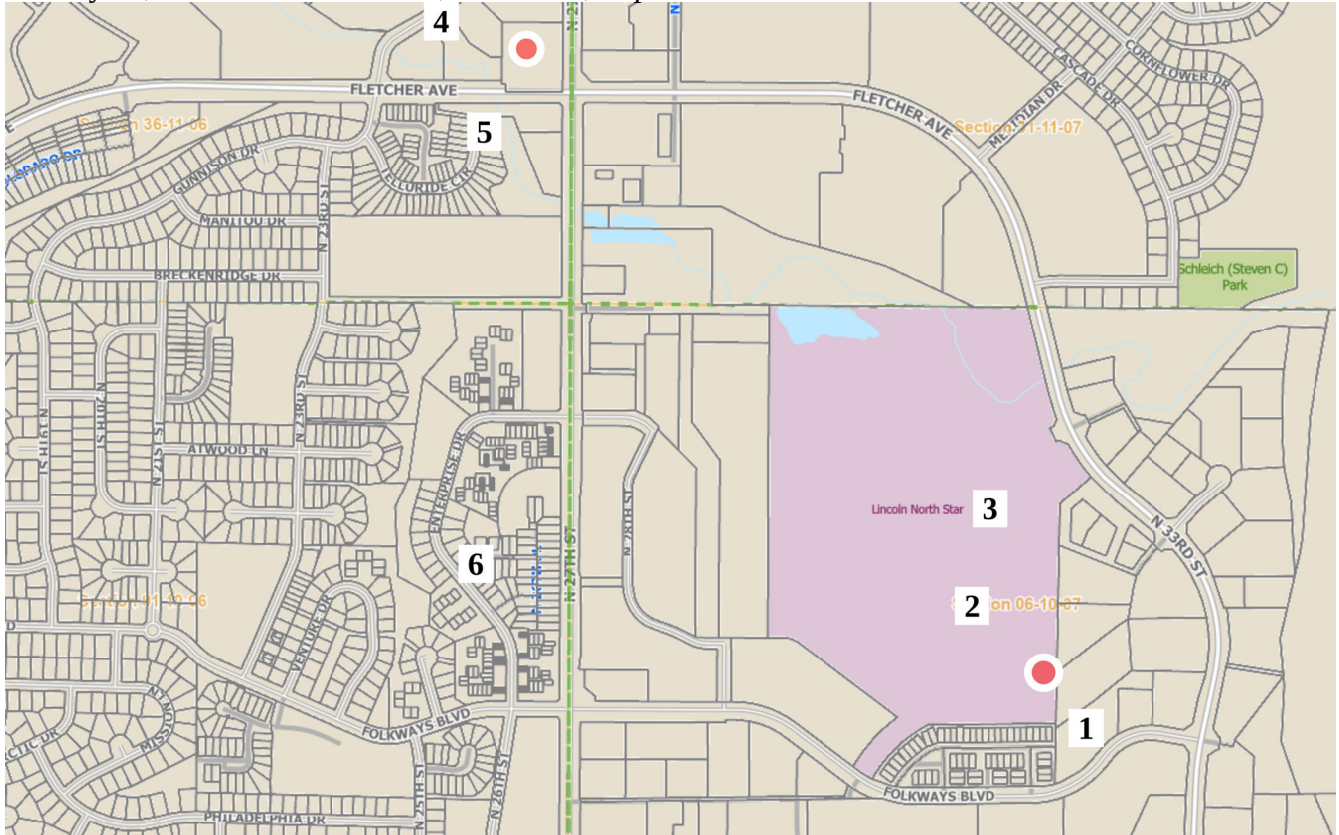


Cell Tower Radiation Level Monitoring – Lincoln, Nebraska

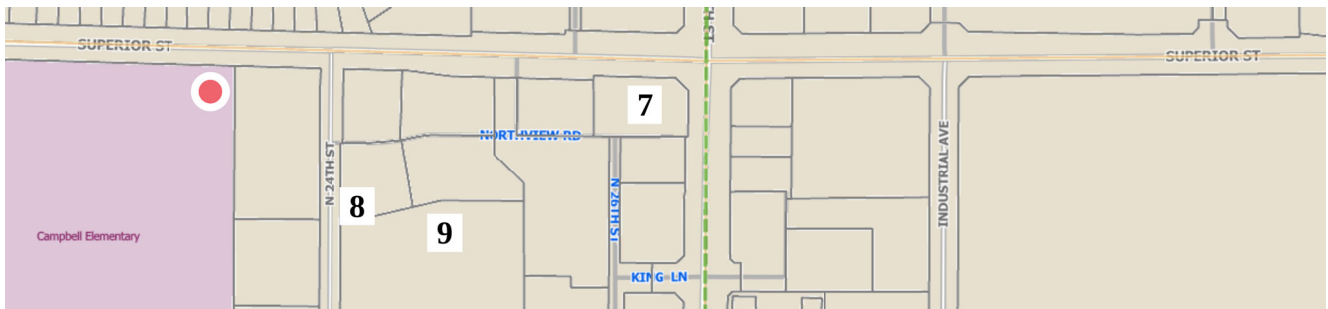
January 22, 2024 – North Lincoln, 27th Street, Superior to Fletcher



Radio Frequency Field – Highest Reading in Volts per Meter by Location and Date (V/m)

Location	1/22/2024				
1. 3240 Folkways Blvd	1.26				
2. Northstar HS Parking Lot	1.06				
3. Northstar HS Parking Lot	0.64				
4. 6201 Telluride Parking	0.96				
5. Telluride Circle Cul-de-sac	0.68				
6. Enterprise & Blaine Dr.	0.27				
7. 4501 N. 27th Parking Lot	2.5-3.0				
8. 4440 N 24 th South Parking	3.65				
9. 4420 N 24 th NE Parking	1.5-4.0				

● Cell Tower Location



See **Information about EMFs & Safety Levels** at emfcenter.com/list-of-available-documents/
 Visit LincolnsOpenSource.com/lincoln-radiation-monitoring/ for more local information